

Haversham-cum-Little Linford Parish Magazine



December 2024/January 2025

Issue 180

Maisies Superstore

*The Leading
School Uniform Supplier
in Milton Keynes
Serving The Ever Growing Town
For Generations
Since 1963*



Monday - Saturday
9am - 5pm

60/64 Church Street, Wolverton, MK12 5JW

01908 313313

EDITORIAL

Hello.

For those who don't know me, I moved to Haversham in 1985.

My children were aged seven and nine at the time, and the younger had a year at Haversham School before moving up to Bushfield School.

They both attended the Youth Club then run by June Burdett and Heather King, and have happy memories of those times.

I was on the Social Centre Committee for a while, and also was part of the Haversham Road Safety Group – which interest seems to have translated

into my involvement with today's Community Speedwatch Group.

I must begin by thanking Lesley and Harvey Gilbert for their many years of both editing the Parish Magazine and managing the advertising content.

They have done an incredible job, and I just hope that, in the interim period until we find a permanent editor, I can do justice to their legacy.

For that, though, I need **YOUR** help!

Some of you already contribute to the content of the magazine – either on an ad hoc basis or in

every issue. There may be others who have thought about submitting an article or a small news item.

We already have some new contributors for this issue, and it will be lovely to include articles from more of you.

So, please get in touch with your ideas and articles. This magazine is **your** magazine – written by the residents for the residents.

E-mail me at:
carol.langham@havershamlittlelinfordpc.gov.uk

or phone me on:
07961 047142.

CONTENTS

3	Editorial	26	Haversham Village School
4	Local News	28	New Councillor Q&A
6	HSCC Information	30	Parish Councillors/Next Issue
8	Parish Council News	31	Busy Corner
12	Jubilee Club – the end of an era	33	Parishes Information
14	Haversham Social and Community Centre	34	LAMP Services
16	Let's Chat Charity	35	A Message from Adrian Low
18	Not Just for the Worms!	36	Memos from St. Mary's
22	Traffic on Haversham High Street	38	News from St. Peter's
24	The History of HSCC Charity	39	The Last Resort

Neither the Editor nor Haversham-cum-Little Linford Parish Council can accept responsibility for opinions expressed by writers or advertisers herein.

Published by Haversham-cum-Little Linford Parish Council and printed by The Print Shop (MK) Ltd © 2024

LOCAL NEWS

Open House Lunch

Julia and Ian Cheetham, on behalf of St Mary's Church, are providing an Open House Lunch at the Old Forge, normally on the third Monday of each month. The lunches are for any member of St. Mary's and St. Leonard's Churches and residents of Haversham and Little Linford. The Old Forge is located on the High Street next to the Greyhound Pub.

Coffee will be available from 10.30 a.m., lunch will be available at approximately 12.30 p.m., and tea and cake on offer in the afternoon until 3.30 p.m.

Maureen White on **07889 654906** has kindly agreed to provide transport for those who need help getting to The Old Forge.

The Open House Lunch in December has been brought forward and will be on Monday 9th December 2024. The date for January is Monday 20th January 2025. There is no charge for Lunch and you will be warmly welcomed.

For further information please call:

01908 914318.

Youth Group

Hello! I'm Amy, and I have the joy of overseeing the Youth Group run by St. Mary's Church, at Haversham Social Centre, alongside co-leaders, Fi and Ben Jones. We also have a dedicated team of volunteers from our church community who support the club with their time and help.

Our Youth Group is a vibrant and welcoming space where young people can come together to forge friendships and have a great time. We pride ourselves on creating a fun, exciting and safe environment for everyone to enjoy.

Activities

We always have an exciting array of activities

lined up! A particular favourite is our Games Nights, where we dive into a variety of games that foster teamwork and laughter. Our Pizza Parties are another highlight, showcasing everyone's creativity as we see how many toppings we can pile onto our pizzas!

We also love getting hands-on with Lego activities, which are always a big hit. The youth have also crafted artwork which has been displayed in the church – using their artistic talents for the delight of the congregations. Film Nights provide a perfect opportunity to unwind and share a movie together, while our Scavenger Hunts and Wide Games get everyone outside and active.



God slot!

We also dedicate a short time each week for a talk or activity introducing questions about life, ethical issues and faith. Starting soon, we'll embark on a new series exploring 'Fruits of the Spirit' focusing on qualities such as love, joy, peace, and patience in their daily lives.

Join Us!

Since our launch in September 2023, we've really enjoyed leading the youth group and got to know them as friends.

If you know any young people in Year 5 to Year 10 who would like to be part of the group, we invite them to come along



on Thursday evenings from 6.30 to 8.00 p.m. in Haversham Social Centre during term time.

The leaders and helpers are all safeguarding trained, and have clear DBS checks.

For more information, feel

free to reach out to us at: st.marys.youth@outlook.com

or call/text me, Amy, at 07415982901 or Fi at 07946 615218. We can't wait to welcome new faces and continue this exciting journey together!



HAVERSHAM SOCIAL AND COMMUNITY CENTRE (HSCC)



Useful Information

The HSCC charity was established to maintain and operate the Social Centre, under licence from Milton Keynes City Council, for the benefit of Parish residents. You can hire the hall for your events, activities, classes and parties. To help fund the Social Centre, the HSCC also runs a number of community events each year.

Booking the Social Centre

The Small Hall (approx. 37m²) is available between 8 a.m. and 6 p.m. weekdays during term time only. The

Entire Hall (approx. 150m²) is available 6 p.m. to 11 p.m. weekdays during term time and 8 a.m. to 11 p.m. at all other times.

Minimum hire period is 1½ hours. Kitchen facilities are available at no charge for light refreshments. There is a charge of £25 per session for full catering use with access to the cooker.

To enquire or book please e-mail: bookings@havershamsocialcentre.org.uk

For more information on the HSCC, please visit our webpage at: www.havershamsocialcentre.org.uk

One-off hire rates:

	Parish Resident	Non-Resident
Entire Hall	£32.50 per hour	£38.00 per hour
Small Hall	£12.00 per hour	£15.00 per hour
Entire Hall – All day (8a.m. to 11p.m.) – non-school days only	£390.00	£456.00
Entire Hall – Children’s Party (4 hrs ending no later than 6p.m.)	£75.00	£95.00

Rates exclude refundable damage deposit – cancellation charges apply

Regular hire rates:

	Parish Resident	Non-Resident
Entire Hall	£12.50 per hour	£18.75 per hour
Small Hall	£5.00 per hour	£7.50 per hour
Entire Hall – All day (8a.m. to 11p.m.) – non-school days only	£150.00	£225.00

Minimum 10 sessions per calendar year – cancellation charges apply

Regular Activities at the Social Centre

There are a number of regular activities held at the Social Centre, both open and closed groups. If you want to run a regular class or activity, then please contact us to check availability.

If you wish to attend any of the activities listed below, please contact the organiser direct via the details provided:

St Mary’s Church Youth Group:
every Thursday during term time from 6.30 p.m to 8.30 p.m. Open to school years 5 to 10.

For more information contact Amy at st.marys.youth@outlook.com or 07415 982901, or just turn up!

Sound Bath Meditation Sessions:
Held by Shon on the 2nd Wednesday evening of every month, 7.30 p.m to 8.30 p.m.

For more information and to book, visit <https://www.facebook.com/SoundBathHaversham/events>

Revival Fellowship:
2nd Sunday of each month from 11a.m to 2p.m.

For current information and contact details, please visit our website at: www.revivalfellowship.uk



JASPERS BRUSHES

(Haversham resident)

CHIMNEY SWEEP & CCTV INSPECTION/ SURVEY SERVICE



Please call Jason on 07895 222080 for an evening or weekend appointment. You can also find me on Facebook.

My rates are reasonable and start at only £55 with a certificate of the sweep also issued. I’m fully insured, and offer a clean and tidy service.

I have been trained by the National Association of Chimney Sweeps (NACS), and I am a current member of the NACS, with a Badge number of 023/17.



PARISH COUNCIL NEWS

– the view from the Chair

Another two months have passed by in a flash and as the last of the autumn leaves cling to the trees, the nights are getting longer and the shorter days are often stubbornly dull, thoughts are, I am sure, turning towards Christmas! As per usual a number of things to update you all on this issue from the Parish Council.

Parish Magazine

This is the first issue to be edited by Carol Langham, who, as reported in the last magazine, has taken over from Lesley Gilbert. Welcome to the role, Carol!

Whilst I have had a small sneak peek at some of the changes Carol is planning, like all of you I will not see the refreshed look until the magazine drops through the letter box in a couple of weeks' time. I hope that you all like it!

Carol and I have had a couple of conversations about the magazine in recent weeks and, as has always been the case,

we strongly believe this is your magazine and should provide local information and articles of local interest.

With that in mind, as well as the contributions from our existing regulars, the Parish Council, School, Haversham Social & Community Centre (HSCC) and the Church, plus the regular local news element, we are adding a couple of new sections.

The first is our charity section where we would love to hear from residents who wish to share either a brief story about an event or activity they are doing, or have recently done, to raise money for charity (such as running a marathon, climbing a mountain etc.) or to talk about work they do for a local MK charity.

The second section is for our younger residents to give them an opportunity to be creative and share a story, poem, picture or drawing they feel proud of, or to talk about a trip, hobby or activity they are

passionate about.

Outside of these two new sections, we also welcome other local interest articles and news. For example, in this issue there is an article on the history of the HSCC. Whether you want to write a regular contribution, submit every now and then, or just write a one-off piece, please contact Carol at carol.langham@havershamlittleinfordpc.gov.uk and have a chat about your ideas.

I also want to say a thank you to our various advertisers who help to support the magazine as this is vital in keeping the magazine going. If you are someone who offers a local service or perhaps use a local service you think may wish to advertise, then please get in touch with the Clerk at clerk@havershamlittleinfordpc.gov.uk for more information.

Highways and Road Safety

The 20mph zone on

Wolverton Road and its side streets appears to be bedding in, having been in place for almost three months. Residents have fed back to us that the scheme appears to be helping, making it easier to cross the road to and from the school. However, our own Community Speedwatch is recording around 20% of drivers speeding at the Wolverton Road location. Clearly, many of these are likely to be people travelling through the village rather than residents, and we have chased MKCC on the need for repeater speed limit signs or painted roundels, which we hope will be installed in due course.

The two Speed Indicator Devices (SIDS) devices along Wolverton Road should be installed very soon, and we hope these will serve as an additional reminder, but please do watch your speed!

The informal consultation for the possible 20mph scheme for the High Street in the old village, alongside speed calming in the form of a number of speedhumps has now closed. The Parish Council is well aware that this scheme has divided opinion given concerns about the impact of speedhumps. In our representation to MKCC

Highways, made after our discussions at the October meeting, whilst we support the 20mph limit as a way of improving safety, we have made a number of comments regarding the scheme overall and asked MKCC to consider the representations from those who live on the High Street as most important. We wait to see what MKCC conclude from the consultation responses but should the scheme be taken forward, the next step will be a statutory consultation with more details on the design.

Subsequent to the consultation regarding the closure of the gated road across Stanton Low to reduce Anti-Social-Behaviour, the road is now legally closed to vehicles and new signage will be installed shortly.

In regard to the various highways maintenance issues, we are expecting MKCC officers to meet with the Parish Council in the next couple of weeks. Realistically, not everything will be resolved but at least we will have a better understanding of what will be done and what is not deemed serious enough. Some works have been completed in the last few weeks and other repairs are agreed but not yet scheduled, so hopefully

some of these long-standing problems will be fixed at last.

Don't forget to use the Report It page on the MKCC website, <https://www.milton-keynes.gov.uk/pay-report-and-apply/report-it> if you see a maintenance issue.

Flooding

We continue to work on finding a resolution of the flooding issues in both villages. One of the challenges is that flooding caused by blocked gullies and drains is usually a highways matter whereas flooding caused by a watercourse like a river or land drain, falls under the Lead Local Flood Authority (LLFA) at MKCC.

In the old village, we are focused on trying to get the gullies cleared to improve matters on the hill and at the end of the High Street by the Pub. Thanks to the local landowner for helping by clearing their drainage ditch. In the new village the combination of blocked gullies and field run-off needs to be dealt with. Again, we hope that MKCC officers will come and meet with us in the coming weeks to see the issues first hand. It is critical that if you ever experience any flooding inside your property, that this is reported to the LLFA on each occasion to help them build up a

picture of the issue. Find more about the LLFA here: <https://www.milton-keynes.gov.uk/flood-and-water-management>

Planning Matters

MKCC have updated their online planning system, so if you wish to look at a planning application and make any comments you can now find this at www.milton-keynes.gov.uk/planning-register. All historical as well as current applications can be found there.

In respect of the MK City Plan, we submitted the Parish Council's representation and now we are all waiting for the next consultation stage early in the new year. If you want to keep up with progress keep an eye on <https://www.milton-keynes.gov.uk/city-plan>.

Little news on the Neighbourhood Plan – Allocated Site, other than we know Gade Homes continue to work through the various 'site constraints' to define solutions prior to submitting the formal

planning application. As and when we hear more, we will share it via <https://www.havershamlittleinfordpc.gov.uk/npsitenews>

Playground Project Update

As we reported last issue, we have the funds to progress the playground rejuvenation project in 2025. The amount of grants raised is around four times our annual precept, so a huge thanks to Maria, our Clerk and former Councillor Parkes-Brincat for the work they did on the various applications over the last 18 months.

There is not a great deal to update on at this time as the next stage is for us to run a competitive tender process (which we are obliged to do given the amount of the spend). The team are working to pull the required documents together and shape our initial design, before we open up the tender via the government procurement portal, Contracts Finder. Once we have our

preferred supplier then the detailed design work will start. As plans and designs progress, we will share updates via our website at <https://www.havershamlittleinfordpc.gov.uk/playground-project>. Lots to do, but very exciting!

Other News

Fireworks: Having been able to attend the fireworks this year, it was great to see so many of you enjoying the display and the food. I know there are other updates on this event in the magazine so I will not say more other than to thank the volunteers who worked to make this a great evening and the residents who support the HSCC by buying entry tickets and food. Over £1,500 of fireworks were purchased to make this such a good event and the HSCC more or less broke even.

It was a shame to hear, however, that in preparing for the event, a substantial amount of dog mess had to be cleared from the Rec by

the team.

An interview with Ben, one of the fireworks team, can be found on page 18 of this magazine.

Jubilee Club: It is sad to see another long-standing village group close its doors at the end of the year. Since starting in 2002, the group has been a regular monthly afternoon club for the older residents of the Parish, and I am sure it will be missed by many, but huge thanks to Lesley Gilbert and her helpers for running the group over many years. Lesley has written a lovely article about the club elsewhere in the magazine.

Litter Picking and Community Speedwatch:

We ran our latest parish-wide litter pick on Saturday 2 November collecting, as usual, a number of bags of rubbish and other items discarded by the road. Thanks to John Clifford and the other volunteers who support this activity as it does make the Parish look smarter each time it is run. Cllr Langham continues to run regular Speedwatch sessions in both the old and new villages along with the volunteer team of trained operatives. Both of these activities would not happen without the people who give a small number of hours of their time to the community each month

or so. Please contact the Clerk (e-mail details below) if you want to get involved and help out with these worthwhile activities. We would really welcome your support.

Councillor Vacancy: our numbers remain at six, so we still have a vacancy for one more councillor. If you might consider joining the Parish Council team and are interested to find out more, then please contact the Clerk. Jess, our most recent joiner to the Parish Council, has talked a bit about her experience so far, elsewhere in the magazine.

2025/2026 Budgeting:

The Parish Council has begun its annual discussion about the budget for the next financial year. Clearly, we need to balance the books and continue to provide the services we operate and maintain the assets we own. In recent times we have reduced our cost base through new arrangements with some suppliers and we continue to do this as far as possible but prices are rising and we also have to take account of other increases such as the employers NI rise in our spend for next year.

Land to the West of Haversham School:

Some of you may have noticed that work has been started on the plot

of land alongside the Rec and the electricity sub-station which is not Parish Council land. A planning application for a three-bed dwelling was approved by MKCC in December 2022 and the owner has now started the building work and cleared the site.

Contacting Us and Helping Out

As well as this regular article, we use our Facebook page www.facebook.com/ParishCouncil and website www.havershamlittleinfordpc.gov.uk to share news and useful information – so please do follow us on Facebook and visit the website regularly. If you have any issues, suggestions or questions for us, or would like to volunteer to help with one of our initiatives, then please either message us via Facebook or e-mail the Parish Clerk at clerk@havershamlittleinfordpc.gov.uk. We will do our best to respond promptly. It just remains for me to wish you all a very peaceful and enjoyable Christmas and a happy and healthy 2025.

Richard Pryor – Chair



HAVERSHAM JUBILEE CLUB – THE END OF AN ERA

After nearly 23 years, it has been decided to close Haversham Jubilee Club after our December meeting. It is sad to lose this much-loved monthly meeting for the older members of our community, but now that I am well into that definition, and I will be moving from the village, it seems time for a change.

The club started in the year of the Golden Jubilee, hence the name, and stemmed from a casual conversation about whether an afternoon club for older folk would be welcome. The older folk I was with nearly bit my hand off, so I pursued the notion with the Social Centre and sought permission from

the school. Several people volunteered to help and so, in April 2002, the club had its first meeting.

The ethos was that we would have a focus point for each meeting – a speaker, a presentation, whatever – and afterwards we would have tea and homemade cakes. Alison Deering was in charge of refreshments so it had to be done properly, with plates and napkins and proper teacups and saucers! And so we have carried on over the years. Needless to say, given the age group, many of our members have moved away or passed away over the years and our numbers, at one point close to the maximum allowed, have dwindled,

then recovered, then dwindled. But we still have a solid group of 22. I think only Harold Lowndes and myself remain from the original group, but many have been coming for a very long time and I know they will miss the monthly get-togethers.

We've had so very many special members over the years but special mention must be made of our original group of Alison Deering, Sheila Shepherd and Pat Brightman, our treasurer for very many years, as well as chief cook and bottle-washer supreme, and later Dot Anderson who was dragooned into organising our monthly programmes, which she carried out brilliantly. Many thanks

also go to Hilary and Sandy Riley who have supported the club and me in recent years, not least Hilary taking on the role of Treasurer.

With a lot of willing helpers in the earlier days, we carried off some ambitious projects – homecooked full Christmas lunch for everyone at the Social Centre, summer lunches too. August garden party in someone's garden survived right through to this year. And we have always celebrated our anniversary, most often with a homecooked lunch at the Social Centre.

These have always been such good occasions. With many members living alone, there is nothing like sharing a meal with friends.

Our meetings have included everything from slide presentations of exotic holiday destinations to charity fundraising Chinese auctions, advisory information to local history, craft lessons to taking a

walk down memory lane, even the very occasional Beetle Drive (few of you will remember what that is but it's great fun!). For many years we also had a variety of outings, thanks in main to Jean Ebner who invited us to join Hanslope WI outings which she organised. We visited a vast array of places and always enjoyed them.

We end 2024 with a presentation on New York at the November meeting by Ray and Jenny Rowilson from Stony Stratford.

Then in December we are all going out for Christmas lunch for a final celebration of the importance of friendship and camaraderie, whatever your age!

Lesley Gilbert



10th anniversary celebration in 2012



August Garden Party at The Old Forge 2007



Christmas lunch at the social centre 2008

HAVERSHAM SOCIAL AND COMMUNITY CENTRE

Thank you to all those people who came and supported our Annual Firework Display. It was lovely to see so many of you helping us to keep Village events going. Without your support, we could not afford to run events like these, and it also helps raise the morale of all those who give their time and effort into putting on this display. It also helped that it was not pouring with rain as it did two years ago.

As always, there are many people to whom I must give thanks, chief amongst them, the team who are responsible for the display. Ben Hazell and Jim Wortley have been doing the display for four years and did a course at Fantastic Fireworks in 2021 on the safe management of a display. They and their team – Dean, who helped with the firing and Lizzie, who managed the critical timings, put on another excellent performance, which we all enjoyed very much.

Ben and Jim also helped with setting up and dismantling before and after the display which was a tremendous help.

Thank you also to Jonathan Duff who organised the refreshments; he was ably helped by Gabriel Duff and Holly Sains. Thank you, also, to Annabelle Sains and Jasmine Viney who sold Glow sticks for us and to all those people who supported Shannon Clark's cake stall.

Shannon is running in the London Marathon

next year in aid of World Cancer Research and is fundraising as much as she can beforehand in aid of this very worthwhile cause. We are also very grateful for Lesley Gilbert's help in the design of the posters for this event and our two forthcoming events.

Grateful thanks to Barry Clift, Richard Pryor, Shula Holt, Pam Williams, Fiona



Viney, who all helped with the set-up and manned the gates and helped to clear up afterwards. Holly and Fiona came on Sunday morning to help clear the field which was appreciated. Thank you also to Trinity Irving, our cleaner, who had the task of cleaning the muddy floors later in the day. Our next event is our annual Christmas Family Bingo on Saturday November 30th, but we hope that that you have seen the notices on the village notice boards and on the HSCC Facebook page www.facebook.com/haversham. It would be great to have plenty of support for this event. This will be followed by our Xmas Wreath-Making Workshop on Friday 6th December. Full details are available in this magazine – spaces are limited so

book quickly.

We are also starting to think about our events for 2025 at the moment, and we hope we can run the usual Curry and Quiz night; the Easter and Xmas Bingos; Village Show Fireworks and the Wreath Making. In addition we would love to run a Village fête in the summer and we are also thinking of new events to run – for example a car boot sale, music events or a silent disco evening.

Preparing and running these events does take time and effort and we are always on the lookout for volunteers to help with one or more of these events. If you are interested in getting involved, or if you have any comments on our existing events or thoughts for ones we could consider running,

then please do get in touch with us at: contact@havershamsocialcentre.org.uk

Without your support to run and attend these events they just would not happen.

Elsewhere in the magazine, you will find an article about the history of the Social Centre and the HSCC Charity, we have just turned 60. It is interesting to look back at the early years.

You will also find details in the magazine about how to book the Social Centre for your event or regular activity

I would like to take this opportunity to wish everyone a Happy Christmas and a Healthy, Happy 2025.

Jackie Brown
Chair

HAVERSHAM SOCIAL & COMMUNITY CENTRE TRUSTEES

Chair:	Jackie Brown
Vice Chair:	Holly Sains
Treasurer (Interim):	Richard Pryor
Secretary:	Fiona Viney
Events Co-ordinator:	Shula Holt

Other elected Trustees:	
Louise Reid	Barry Clift

LET'S CHAT CHARITY!

Do you support a charity? We know some of you take on challenges to raise money for great local or national causes. Others devote time by working for, volunteering or being a trustee for various MK-based or nearby charities.

We are starting a new (hopefully regular) section 'Let's Chat Charity' to give residents the opportunity to share their charity stories, increase the charity's profile and perhaps raise additional sponsorship or funds.

If you want to contribute

for a future issue, please submit your content to the editor (e-mail: carol.langham@havershamlittlelinfordpc.gov.uk) and include a relevant photo if you have one!

To kick us off we have...

Shannon Clark

Running through Haversham: my London Marathon journey

I'm Shannon and next year, on the 27th April, I'll be taking on the London Marathon. It's definitely going to be an iconic location for my first ever marathon! So far, it has been a whirlwind, especially since I only started running this year, but luckily and to my own surprise, I'm really enjoying the training.

I'm running to raise money for Worldwide Cancer Research, a charity that means a lot to me. Over the past two years, cancer has hit close to home, as both my best friend and my boyfriend lost their mums to this devastating disease. It has made me realise just how important it is to support research that can bring us closer to a world without cancer.

Worldwide Cancer Research focuses

on something called discovery research. This is the first step in the fight against cancer, where scientists work on bold new ideas to understand how cancer works and how we can stop it. It's groundbreaking, but funding for this kind of work has dropped by 25% in recent years. The charity can currently only fund 20 out of the 100 projects that they need to each year, which is why every donation really

does count. Especially when you consider that cancer is set to be the world's biggest killer by 2030, with one in two of us developing cancer in our lifetime.

To secure my



marathon place, I've pledged to raise at least £2,250. I'm just over halfway there, thanks to some wonderful support at events that I've hosted like a bingo night and the cake sale at the Haversham Village Fireworks. It's been really heartwarming to see how generous and supportive people have been – it definitely helps to keep me going even when my legs

don't want to.

Over the next few months, you're likely to spot me running around the village as I keep ramping up the training. If you see me out there, feel free to give me a shout of encouragement – it makes a big difference!

If you'd like to follow along with my training journey, I'm sharing updates on Instagram (www.instagram.com/talesfromthecountry) and TikTok at [@talesftcountry](https://www.tiktok.com/@talesftcountry). And if you're able to support my fundraising for this amazing cause, you can find my page at <https://tcslondonmarathon.enthuse.com/pf/shannon-clark>.



Thank you so much to everyone in the village who has already helped me get this far – it's been incredible to see the community rally together.



Swansway Self Storage Containers



- 20ft containers available to hire in Haversham
- High security locks, well-lit area with CCTV

For information, contact Rachel 07710 603417

NOT JUST FOR THE WORMS!!

The annual Haversham Fireworks, organised by the Haversham Social and Community Centre Charity, took place on the evening of 2nd November at the Recreation Ground.

As always it was a great event, attended by over 300 people from the Parish and neighbouring areas and the money you spend helps the charity to put this display on each year for our community and helps to cover the cost of over £1,500 annually for the fireworks themselves.

The firework display is set-up and run by a group of volunteers, and after the event we caught up with Ben, to find out a little more about what it takes to put on such an amazing show.

Ben, you've been part of the fireworks team since 2021. Why did you decide to get involved with this event? Were fireworks something you had done before?

The Magazine was advertising for volunteers, and I had recently moved to the village so it was a great opportunity to have some fun on my doorstep. The role also included some training which also appealed so I couldn't reply fast enough....though I think Jim pipped me to it!

Of course I'd let fireworks off before but never on this scale or with the pressure of a large audience and a significant amount of other people's money.

You are part of a small team which put together the display. Would you like to introduce them and explain what they do and how you all ensure we have such a great and safe event.

Jim and I answered the advert for what was really a changing of the guard, so the team was brand new. We roped in Suzanne to assist, quickly realising we needed help in sticking to time as the fireworks have different running lengths. With each order we get a free training place so for additional resilience we recruited Dean in 2022.

Jim has an exceptional eye for detail, is beyond thorough and always generous with his 'top tips'! He leads the crucial prepping; each cake

(large firework made up of multiple tubes) is wrapped in clingfilm to protect them from the elements; really important as set-up takes 3-4 hours in daylight. Jim also checks the running time of each firework and makes sure they are correctly numbered and match the firing order.

Director of firing is Suzanne who performs this critical role with razor precision, indicating when it is time to light the next fuse; if there is a gap in the display this is down to a firework not lasting as described, certainly not down to a timing error!

Dean brings unparalleled organisation, enthusiasm and is extremely resourceful – there is nothing Dean cannot fix or source. Having a third person to share the lighting with Jim and myself is great, especially this year when three fireworks needed lighting at the same time.

I negotiate funds, place



and collect the order and we all help with the preparation, set up and clearing up at the end. I also do the post display tip run and enjoy the smell of fireworks in my van the following week!

What's the process you go through? How do you choose the fireworks? How do you go about putting the display together? How long does it take to prepare the show?

In 2021 as newbies Jim and I spent a whole Sunday at a fireworks training ground with some classroom time before practical training. Neither of us anticipated how much there was to cover and it all contributes to the displays we put on.

In terms of choosing, we love the large cakes. We avoid rockets as the large ones have pretty hefty sticks and large plastic fuselage for a few reasons; what goes up, must come down, so we're conscious of potential claims for damaged vehicles or conservatories as well as neighbours and the audience! We must consider the direction and strength of the wind when firing rockets – for obvious reasons...

Each firework is laid out (following a plan provided by our supplier) on a wooden base which is

tilted slightly away from the audience. We add a wooden stake to which the firework is strapped which prevents them from moving and firing in all directions. The minimum distance for spectators is 25m, but we allow 40m.

Do you use any special equipment to run the display or are you just running around and 'lighting the blue touch paper'?

Recalling the 'Firework Code' from our youth, we were very surprised that instead of the red and

white tapers we remember, the most efficient way of lighting is with a plumber's blow torch! These are very quick as we try to avoid long delays in the display.

In case of a failed light, most of the fireworks have a secondary fuse...this year was the first time I lit one of these, but only after the firework had been dormant for a few minutes.

A head torch is also really important – Dean bought me an excellent one for Christmas a few years back! PPE includes a flame-retardant boiler suit,





eye protection and a hard hat as we get fairly close when firing.

Over the years that you have been doing this, has anything not quite gone to plan and what did you do to resolve that? Any funny stories you would like to share?

It has been pretty successful. In 2023 the rain was just dreadful and we've since been using bin liner 'socks' over the fireworks when they've been set up – that year we lost four, unfortunately, despite very thorough waterproofing efforts. One year, one of three tall fireworks was installed upside down creating a fabulous display for the Haversham worms....I'm not sure anyone noticed but we knocked that up to experience, triple checking and reminiscing (!) in subsequent years.

Are there any ideas for future displays that you have yet to put into practice (without giving away any surprises!)

Good question – we'll give some thought to that for next year. Now we've done a few displays we might look around at alternative suppliers and see what else there is to offer; however, we are

very keen to keep things simple and straightforward to execute as we only get the one opportunity to fire – dress rehearsals would be expensive!

Putting on the display, we actually see very little of it so we rely on audience feedback which, fortunately for us, has always been complimentary and we keep being asked back.

We hope, like us, that

you find this all rather interesting. It takes some real skill to put this all together in a safe and spectacular way. It remains for us to thank Suzanne, Jim, Dean and Ben for the time they volunteer to produce one of the village highlight events of the year, and also many thanks for answering our questions.

HcLL Magazine Team

Holistic Massage Therapy

Massage therapy room based on North Street, Castlethorpe.

Full body, deep tissue and natural lift face massage. Also offering baby massage classes on Mondays and Thursdays.

Invest in yourself to experience deep relaxation, relief from pain and tension release.

The Garden Room

Sarah Brown - 07702604287
thegardenroom_mk@outlook.com

thegardenroom_mk
thegardenroommk

When replying to this advert please quote ref: HCLL04

OSSIO CHIROPRACTIC

Human and veterinary care



Let us help you AND your pets!

We help all spines no matter whether they're human or animal.

Ossio Human and Veterinary Chiropractic
86 The High St.
Stony Stratford
Milton Keynes

MK11 1AH
When replying to this advert please quote ref: HCLL05

e: hello@ossioclincs.co.uk

T: 01908 265 222



Register of Animal Musculoskeletal Practitioners

When replying to this advert please quote ref: HCLL05

☺ TRAFFIC ON HAVERSHAM HIGH STREET WHAT DO THE SPEED INDICATOR DEVICES TELL US? ☺

The Speed indicator devices shown in the photos have been in place since February 2020. The Parish Council regularly monitor the speeds and volumes of traffic along the High Street and publish the statistics on their website and on Facebook. Similar devices will soon be in place on Wolverton Road, and monitoring will then take place from these new indicator devices.

The purpose of this article is to give a personal view on what these statistics mean and on whether or not they have the intended effect of slowing down speeding traffic and hence

increasing the safety of residents and motorists alike.

Indicator 1

Indicator 1 is located at the Sailing Club turning on the High Street, and picks up cars and other vehicles travelling from the Greyhound Pub. It records the speed and numbers in each speed band every 15 minutes. It does not take any photos or record registration numbers of vehicles. It cannot be used for enforcement of the speed limit, but the 'Slow Down' message shown when travelling over 30 is intended to encourage

motorists to do so.

During the whole of August 2024, 35 thousand vehicles were recorded as passing this device. This is an average of 1,140 vehicles per day or 48 vehicles per hour. There were, of course, fewer vehicles recorded during

the night and early hours than in the day time. The peak period for this device was 4.00-6.00 pm Monday to Friday when an average of 190 vehicles per hour passed the indicator.

What about the speeds of these vehicles? 15 out of every 16 vehicles were travelling below the current speed limit of 30 mph and only one out of 16 was travelling above this speed. The average speed was 25 mph. Often this might be because of parked vehicles on the roadside, but I would like to think that motorists are aware of the narrow road and kerbs and the residential nature of that part of the High Street.

Average speeds were slightly lower in the peak traffic periods at 24 mph and one in 20 over the speed limit.

Indicator 2

Indicator 2 is located near Broadacre and picks up vehicles travelling from Mill Road towards the narrow hill down into the High Street proper. In August, 34 thousand vehicles were recorded, but speeds were much higher than at the Sailing Club, with half of them travelling at over the

current speed limit of 30 mph and with an average speed of 31 mph. Again, in the peak traffic period (7.00 to 9.00 am weekdays in this case) there were many more vehicles (150 per hour compared to 44) but, in contrast to indicator 1, the speeds were much the same.

Has speeding decreased?

The short answer appears to be no. The devices were installed during 2020, but we only have regular monthly statistics from January 2022. Traffic volumes increased slightly in 2023 but fell back to 2022 levels this year. Average speeds have stayed in the bands of 23-25 and 31-32 respectively. Some statistics from temporary mobile speed indicators at Broadacre are also available for selected months in 2017 to 2019.

I am not sure how comparable these are, but the average speed was the same as 2023 at 31 mph

Despite the lack of any statistics to back it up, my personal view is that many motorists (including myself unfortunately) only start slowing down to 30 once they see the



speeding message at Broadacre. If so, then the average speeds down the hill and at the bottom will be slower than they would otherwise have been without the warning signs.

Speed Watch

Interestingly, the percentages travelling over the speed limit at both indicators increased gradually up to mid 2023, to 8% and 58% for indicators 1 and 2 respectively, but have since fallen back to the current levels of 5% and 48%.

It is possible that the

regular new speed watch sessions by Parish volunteers are the reason for this. They started in October 2023 and although they only record speeds travelling towards the Greyhound along High Street, they will have helped reinforce the message that speeds should remain below the speed limit. During these sessions 3%, or one in 35, were recorded as travelling over the speed limit and sent a warning letter by the police.

**Philip Turnbull
November 2024**



THE HISTORY OF HAVERSHAM SOCIAL AND COMMUNITY CENTRE CHARITY

On 22nd October 2024, the Haversham Social and Community Centre (HSCC) Charity turned 60 years old, as the original constitution was registered on that date in 1964.

The idea of a Social Centre for the Parish goes back even further, to sometime soon after World War Two when the idea was born. According to David Brightman's book *Haversham Estate and the Parish I Grew Up In*, 'a few residents held a meeting outside the Tudor Stores [now No 1 Manor Drive] with the view to forming a Social Centre Committee. This was done and the first temporary premises were the old Prisoner of War camp or at least the use of one of the huts [where Keppel Avenue is today].

For many years this hut was the centre of nightlife in Haversham with wild nights of

debauchery consisting of Whist Drives, Beetle Drives, Dances, Parties, W.I., Dahlia Society, and a well attended Youth Club.' ©David Brightman November 1998.

We think this incarnation ran from about 1948, when the POW camp closed, until around 1958 when the land was sold for development and the camp huts finally demolished.

Meantime, there was already talk of a new village school to replace the one in the Old Village, the first phase of which opened in 1959. The second phase of building included the 'annexe', and in 1964, the HSCC charity was set up to 'establish and maintain a Community Centre for the district of Haversham Parish' and, with what must have been an immense effort, the Charity and the community

raised sufficient money to fund the building of what we know today as the Social Centre (the Small Hall, Kitchen and communal areas including

the toilets) alongside the school's assembly hall.

We understand the finished school with the annexe was officially opened on May 19th 1965. In return for the funding provided by the Charity towards the building, the County Council of Buckingham granted the Charity a licence on 1st April 1966, that allows the Charity to use and hire out the small hall at all times plus the larger hall outside of 'normal school hours' in order to 'further the spiritual, mental, social and physical activities of all members of the community'. The money we receive today from hiring the hall or from fundraising events held, is used to operate and maintain the facility. Any surplus is invested in improving the hall or supporting future events. We do have a number of plans we would love to be able to undertake in time including improving the acoustics in the hall and providing Wi-Fi and audio-visual equipment.

The purpose of the Charity and the licence arrangement for the hall, remain largely unchanged

to this day and that is the basis on which the HSCC operates, both in terms of providing the hall for hire to residents and other organisations, as well as running our own events.

As a charity we remain a member-based organisation meaning that every Parish resident over 18 is a member of the charity and can stand for election as a Trustee and vote on resolutions at our Annual General Meeting (normally held in March of each year).

Like all charities, Trustees are responsible for the governance of the Charity including the commercial and financial aspects such

as managing the hall hire.

In addition, we run a number of events each year that we very much want to continue plus we would also like to do more, so we are always looking for volunteers both to help with the management and planning of one or more events and to help out on the day of the event.

Sadly, some long-standing events, such as the Village Fête, have not been able to be run regularly in recent times due to insufficient volunteer numbers.

If you are interested in getting involved either as a Trustee, or as a

volunteer, then please do get in touch at contact@havershamsocialcentre.org.uk.

If you are planning a special event or want to hold a regular activity please also get in touch at bookings@havershamsocialcentre.org.uk to find out more about hall availability and our very reasonable hire rate, and also do support our events, as it is 'all for charity'.

Here's to the next

60 years!

The HSCC Trustees



Coronation Event 1953 held in the old POW camp

HAVERSHAM VILLAGE SCHOOL



It is difficult to believe that we are already entering the run-up to Christmas. As I write this article, preparations are well underway for the upcoming Christmas performances and other seasonal festivities.

I would like to share the news that Mrs. Perschky has now officially retired from her role as our dedicated caretaker. For years, she served with unwavering commitment, ensuring the school was a welcoming and well-maintained environment for students, staff and visitors alike. Fortunately, Mrs Perschky will still continue her lunch-time supervisory role within school. Stepping into the caretaker's role is Mr. Gatehouse, who brings with him a wealth of experience and a passion for maintaining a safe and vibrant space for everyone. We look forward to seeing the new ideas and care he will bring to our school.

In my last update, I shared the exciting news about the installation of a Victorian train carriage, which will soon serve as our new school library. I am pleased to report that the project is progressing smoothly, with final touches currently

underway to ensure everything meets our highest standards. With the progress, we are optimistic that the carriage will be ready for use by the new year. The anticipation is growing, and we can't wait to unveil this unique and inspiring addition to our school community.

Since my last magazine entry the children have had lots of exciting trips and experiences. Our year three pupils recently enjoyed an incredible school trip to Flag Fen in Peterborough, designed to enrich their understanding of the Stone Age. The day was filled with hands-on activities that brought history to life. The children enthusiastically built wattle and daub walls, created Stone Age-inspired art, and even learned the basics of spear hunting techniques. The experience culminated



with a cosy fire inside a traditional roundhouse, giving them a true sense of how people lived during those ancient times. It was a memorable day that sparked curiosity and excitement for the past!

Our youngest children visited Salcey Forest this half term as part of their learning. The children completed several forest school activities and were extremely pleased to be spending the day outside. I am pleased to say that the children were blessed with glorious weather. As you can imagine they returned to school very tired and a little bit muddy but all had a fabulous day.

The children have also enjoyed a variety of themed dress-up days that perfectly complemented their curriculum topics. These special days have included a Roman Day, a Stone Age Day and an exciting Superhero Day.

Two of the events included a story teller who used books to bring the curriculum to life, sparking imagination and making their lessons unforgettable.

The school has continued to collect food donations

for the MK food bank this year. Our student councillors were extremely helpful and assisted with the loading of the donations.

We recently hosted a fantastic sponsored event that was both exciting and inspiring for the children. The event featured Frederick Afrifa, a talented sprinter, who led the children in a sponsored activity. The children had the unique opportunity to take part in a short lesson with Frederick, where they learned valuable tips on fitness and motivation. Following the activity, Frederick delivered an

engaging assembly, sharing his personal journey and experiences as an athlete. His story was truly inspiring, encouraging the children to believe in their own potential and strive for success in everything they do. It was a memorable event that energised and motivated everyone involved.

As a school, we are very much looking forward to the weeks ahead. The lead-up to the Christmas break is always a busy yet incredibly enjoyable time, filled with a variety of activities and events. To stay updated on all the

exciting things happening, be sure to follow our Twitter page, where we'll be sharing highlights and moments from throughout the term.

Best wishes,

**Mr David Ley
and all of the Staff at
Haversham Village
School**



**LEO ANTIQUES**

**1 Rose Court,
Olney MK46 4BY
Tel: 01234 240003**

Visit Olney this season to find something that bit different. Come along and celebrate our first Christmas in our cosy new premises just inside Rose Court.

We have gift ideas for the whole family with prices from £5 for that last-minute stocking filler, to a few hundreds for a timeless piece of furniture or perhaps a beautiful painting, or beautiful piece of jewellery for that someone special.

Open each day in December to give you plenty of time to browse through our wide range of goods. Even if it's chilly outside, you can be sure of a very warm welcome.

When replying to this advert please quote ref: HCLL06

NEW COUNCILLOR Q&A

Cllr Jess Cunniffe is the Parish Council's newest recruit, having been appointed in June. We asked Jess to give us a snapshot of what it is like being a Councillor...

1. What motivated you to become a Councillor?

There are so many great things about Haversham, from our rural surroundings to our community spirit, but I also think there are lots of ways our village can be improved – and our local council has a big role to play in that.

2. In an average week, how much time do you dedicate to work related to the Parish Council?

It totally depends. It might be several hours a week; it might be one. It also depends how you define parish council 'work'. I speak to neighbours and friends every day anyway; being a councillor means I'm able to feed back any concerns or ideas to the council and act upon them. Anything I get heavily involved in is usually an issue I really care about or one that is particularly important to the village, so it's never a burden or chore. We're all mega busy these days. Being a councillor makes me just a little bit busier!

3. Is there something

Councillors can get involved with, or have influence in, that you didn't expect from the outset and you think would surprise people?

Most people know that parish councils are responsible for a limited range of matters, like allotments, playgrounds and dog waste bins. These are important things – I think governments can underestimate the impact of so-called quality of life issues. But beyond the core responsibilities of the council, there is its power to influence, for example, on issues like road safety, which is a responsibility of Milton Keynes City Council.

4. In your mind, have you got one key thing you aim to influence and change in the Parish during your tenure as Councillor?

I'd like to help make Haversham a safer and more pleasant place to live. I'm determined to help make Wolverton Road less dangerous and easier to cross. I'd love to make cycling, running and walking in and around the village a more attractive option for people. I'd like to see our popular playground rejuvenated and more opportunities for young people – and ensure we make the

most of our heritage and countryside.

5. How will an additional Councillor help the Parish Council as a whole and the services it provides to residents?

Everyone on the council has different perspectives and areas of expertise. A new councillor would really add to that. As the lowest tier of government, the parish council is the grassroots voice of the community. With another resident among our number, we'd be able to shout even louder for Haversham.

It is so useful to talk to Councillors about their experiences and understand whether joining the Parish Council might be something for you. We have one vacancy at the moment – so if you would like to speak to an existing Councillor or the Clerk please e-mail: clerk@havershamlittlelinfordpc.gov.uk for an informal chat. We need a Parish Council with Councillors who have a broad spectrum of different skills and experiences so there is no specific skillset – other than a wish to improve the Parish and a dollop of determination!

Maria Manthorpe
Clerk to the Parish Council

BAROVIĆ
JEWELLERS OF STONY STRATFORD

BAROVIĆ INDEPENDENT, FAMILY-RUN JEWELLERS
REPAIRERS AND MANUFACTURERS

JEWELLERY REPAIRS
CLAW RE-TIPPING
& STONE REPLACEMENTS
REMODELLING & REPURPOSING
RING SIZING
RHODIUM PLATING
BESPOKE COMMISSIONS
PEARL RESTRINGING
VALUATIONS
HAND ENGRAVING
POLISHING & CLEANING SERVICE
WATCH REPAIRS & REFURBISHMENT
WATCH BATTERIES AND STRAPS

WEDDING BANDS | RINGS | NECKLACES
BRACELETS | WATCHES

OPENING HOURS
TUE - FRI: 10AM TO 4PM
SAT: 10AM TO 3PM
SUN - MON: CLOSED

📍 4 High Street, Stony Stratford MK11 1AF
🌐 www.barovicjewellers-mk.co.uk
✉ info@barovicjewellers-mk.co.uk
☎ 01908 415225 📠 07764 376468
📘 @BarovicMK

YOUR PARISH COUNCILLORS

Chair: **Richard Pryor**
3 Mill Road
Tel: 07824 483337
Jess Cuniffe
07841 521367
Philip Turnbull
3 Granary Close
Tel: 07710 423032

Vice-Chair: **Barry Clift**
21 Wolverton Road
Tel: 01908 312365
Carol Langham
108 Wolverton Road
Tel: 07961 047142
Rick Whyte
The Crescent
Tel: 07599 218001

PARISH CLERK

Maria Manthorpe E-mail: clerk@havershamlittleinfordpc.gov.uk

NEXT PARISH COUNCIL MEETINGS

Parish Council meetings usually take place at 7.30 p.m. on the third Monday of each month at the Social Centre. The meetings are open to the public.

The next meetings are:

16 December 2024
20 January 2025

Parish Council meeting agendas are published online and on the parish notice boards the week before each meeting.

Additional news and information can also be found on the Parish website at havershamlittleinfordpc.gov.uk

NEXT ISSUE OF MAGAZINE

Our next issue is for February/March 2025

Copy date will be 17th January 2025

and the magazine should be ready for distribution on or around 1st February 2025

All contributions welcome.

Please pass them to:

Carol Langham, 108 Wolverton Road,
Haversham.

Tel: 01908 316450 Mob: 07961 047142

E-mail: carol.langham@havershamlittleinfordpc.gov.uk



There is a 20mph zone now in place in New Haversham.

This covers Wolverton Road, Beech Tree Close, Brookfield Road, Rowan Drive, Chalmers Avenue, Keppel Avenue, Manor Drive and The Crescent.

Don't get caught out!



BUSY CORNER

YOUNG PEOPLE OF HAVERSHAM – WHAT'S BEEN KEEPING YOU BUSY?

Are you a young person who has something to share with the village? This page is for YOU. Whether you're 18 months or 18 years old – or anything in between – we want to hear about what you've been up to.

Have you been somewhere amazing on a school trip, day trip, or holiday...

...or achieved something incredible at school or with your sports team?

Have you learnt about a fascinating subject recently...

...or created a masterpiece you're really proud of?

Do you have a hobby you'd like to share...

...a book you'd love to shout about...

...or an impressive idea you just have to impart?

If so, we want to hear from YOU!

Send your write-ups, stories, poems, paintings, photos, craft projects,

recipes, reviews – anything you like – to carol.langham@havershamlittleinfordpc.gov.uk and we'll publish the best ones in future editions.

Our first Busy Bee is Rafe, aged 4, reflecting on his first term at school.

I started at Haversham Village School in September. It's been a packed few months. We learnt all about farming from our visitor, Farmer Dunn. We had an athletics training session from a gold medallist, Fred Afrifa.

We performed a harvest assembly for the parents, all about an enormous turnip that is SO big it won't fit through the



window OR the door.

The best bit of school so far has been our first ever trip. Our class went to Salcey Forest to take part in a day of 'forest school' activities. It was very, very, very, very, very fun. I knew I'd be learning to read and write at school; I never imagined I'd learn how to build a den and make clay faces.

Christmas Tree Festival

Saturday 14th & Sunday 15th December 2-4pm Children's craft activities, tea and cakes will be available both afternoons.

Orphean singers will be performing on Saturday. Sunday will include the Christingle service starting at 3.30pm.

If you would like to decorate a tree, please contact Joanna (by 6th December) who will have all the details:
Tel: 07989821436 E-mail: joanna.low57@gmail.com



Bring a picture or memento of someone special for our memory tree. For more info, contact Fi Jones – 07946615218 or email: fipwum@gmail.com

MANLEY ELECTRICAL

Friendly, reliable, Haversham based electrician available for all your electrical needs

- Lighting installation
- Adding/moving sockets
- Consumer unit replacement
- Power to outbuildings
- Security cameras
- Solar Panels/Battery storage
- EV Charge Points
- EICR
- Extension/conservatory wiring
- Fault finding

All work fully certified, insured and completed to the highest standard

Call now for a **FREE** quotation!

TEL: 07538098199

Email: john@manleyelectrical.co.uk

www.manleyelectrical.co.uk



City & Guilds
Qualified



THE PARISHES OF HAVERSHAM-CUM-LITTLE LINFORD AND TYRINGHAM WITH FILGRAVE

Area Dean Priest for the LAMP group of churches

Rev. Adrian Low 07883 717642 rev.adrian.low@gmail.com

Churchwardens for St Mary's, Haversham, and St Leonard's, Little Linford

Joe Geary 01908 510289 joegeary100@gmail.com
Fi Jones 07946 615218 fipwmum@gmail.com

Churchwarden for St Peter's, Tyringham with Filgrave

Marion Hansford 01234 711566 mariford@btinternet.com

BAPTISMS, MARRIAGES, FUNERALS AND PASTORAL NEEDS

For information about Christenings, weddings, funerals, or if you would like a visit for any reason, please contact Rev. Adrian Low, The Rectory, High Street, Haversham, Milton Keynes MK19 7DT. Telephone 07883 717642 or e-mail: rev.adrian.low@gmail.com

ST MARY'S CHURCH BEREAVEMENT GROUP
Please contact Fi Jones on 07946 615218 or by e-mail at fipwmum@gmail.com



FOR UP-TO-DATE INFORMATION ON CHURCH SERVICES AND EVENTS

Check out the LAMP group website at <http://the.lampchurches.com> or our Facebook page at www.facebook.com/stmaryhaversham where you can find lots of other details about our worship.

HAVERSHAM MORNING WORSHIP

After each 11 o'clock service, members of the congregation are invited to stay for refreshments.

LAMP GROUP CHURCH SERVICES

2024

01 December	9.30am	Holy Communion	Tyringham
	11.00am	Morning Worship	Haversham
	4.00pm	Toy Service and Christingle	Emberton
08 December	11.00am	Morning Worship	Haversham
	11.00am	Holy Communion	Emberton
	6.00pm	Carol Service	Little Linford
15 December	9.30am	Holy Communion (said)	Haversham
	3.30pm	Christingle	Haversham
	6.00pm	Carol Service	Tyringham
	6.00pm	Evensong	Emberton
22 December	9.30am	Holy Communion	Little Linford
	11.00am	Morning Worship	Haversham
	3.30pm	Carol Service	Emberton
24 December	6.00pm	Carol Service	Haversham
	11.30pm	Midnight Communion	Tyringham
25 December	9.30am	Family Communion	Haversham
	11.00am	Family Communion	Emberton
29 December	11.00am	Wassail	Little Linford

2025

05 January	9.30am	Holy Communion	Tyringham
	11.00am	Morning Worship	Haversham
	6.00pm	Something Else on Sunday	Emberton
12 January	9.30am	Morning Prayer	Little Linford
	11.00am	Morning Worship	Haversham
	3.30pm	Holy Communion	Emberton
19 January	9.30am	Morning Prayer	Tyringham
	11.00am	Holy Communion	Haversham
	6.00pm	Evensong	Emberton
26 January	9.30am	Holy Communion	Little Linford
	11.00am	Morning Worship	Haversham
	11.00am	Café Church	Emberton
02 February	9.30am	Holy Communion	Tyringham
	11.00am	Morning Worsip	Haversham
	6.00pm	Something Else on Sunday	Emberton
09 February	9.30am	Morning Prayer	Little Linford
	11.00am	Morning Worship	Haversham
	3.30pm	Holy Communion	Emberton
16 February	9.30am	Morning Prayer	Tyringham
	11.00am	Holy Communion	Haversham
	6.00pm	Evensong	Emberton
23 February	9.30am	Holy Communion	Little Linford
	11.00am	Morning Worship	Haversham
	11.00 am	Café Church	Emberton

A MESSAGE FROM ADRIAN LOW

I've just had a miserable week. I was feeling bleak over the election of Trump, but as a friend remarked, 'it's a different country with different politics' – and what do I really know why the USA voted him in? I do know that I don't want climate change denial, protectionism, mass deportations and unkindness, to be the mark of leadership in the free world. Trump's favourite word, he says, is 'Tariff', 'more beautiful than Love.' – Oh dear. No, it isn't.

Then Gaza – Qatar decided to cancel their hosting of peace talks because neither side seems genuinely to want peace. So many women and children are being slaughtered daily, so many being relocated and starved, so much destruction and so much hate. Oh dear.

Then there was the resignation of the Archbishop of Canterbury – my boss's boss's boss. I've read the report – well – most of the 253 pages of it. It describes the dreadful punishment

meted out to children and young men by John Smyth, a barrister who claimed to be a Christian. I had to pause the reading a few times, to process it. Smyth left the UK in 1984 to continue his abuse in Zimbabwe and then South Africa. Archbishop Justin has, probably more than anyone, helped ensure that every parish has a Safeguarding Officer, and all church leaders and those working with children and vulnerable adults, are now trained in safeguarding and checked against police records.

Back in 1984 Justin Welby was neither a priest nor did he have a call to ministry. He was working in the oil industry. His resignation was a response to the church's much earlier inadequate transparency. I wish others would stand down when they, or their institution, do wrong.

But then I am buoyed up as I remember so much loving that people do. Just within the church congregation, for instance, are active members of multiple charities,

individuals running a coping-with-grief group, youth group, warm lunches, study and prayer groups, and friends of the church sorting churchyards and helping in so many ways. And soon it's, WO-HO, the Christmas Tree Festival, Christingle, Carols on the Green, Carol Service, and so on. And 1st December, 11a.m, St Mary's Haversham we celebrate the dedication of a new baby in the newly decorated St Mary's. Come and see! Brilliant.

Christmas – the clue is in the name – the birth of Jesus Christ who braved this deeply broken world 2000 years ago to show what love, leadership, peace and hope can and should really be like. Now that gives me sure hope – and if you fancy a bit of that hope to overturn your autumn doldrums, see you in church!

Best wishes,

Adrian Low

Area Dean and Priest for Haversham, Little Linford, Tyringham and Filgrave



NEWS FROM THE PEWS MEMOS FROM ST MARY'S

At this time, the Church year moves into the season of Advent beginning on Sunday 1st December and ending on Tuesday 24th December. By the meteorological calendar, the first day of winter is always 1st December; ending on 28th (or 29th during a Leap Year) February. The rhythm of the seasons move from the beauty of the falling leaves into the darker colder days of Winter. Advent (which means preparing) gives us an opportunity to look back and remember the birth of Jesus and look forward to his coming again. Looking back through November, on 3rd November in a newly cleaned, carpeted and decorated St Mary's, many local people attended a moving memorial service to remember those who had died, to hear their names read out and light a candle in their memory. On 10th November, the more formal National Service of Remembrance was held. This was enhanced by several spectacular displays of red roses and poppies arranged by one of the St Marys' flower team. Further cleaning and clearing of the outside

of the Church with our big Churchyard Clear-up was due to take place on Saturday morning 23rd November. Each year Mr Joe Geary and his trailer collect at least two trailers full of leaves and bush cuttings which, when rotted down are distributed around all the public spaces in Milton Keynes. How's that for recycling!! Looking forward to the Open House lunch at the Old Forge, the next lunch will be Monday 9th December. This is a free lunch open to members of St Mary's and St Leonard's Churches and residents of Haversham and Little Linford. For transport please contact Maureen White on 07889 654906. On the weekend of Saturday/Sunday 14th/15th December we have a repeat of our very successful Christmas Tree Festival from 2-4 p.m. On Saturday the Orphean Singers will be here together with children's activities and on Sunday at 3.30 p.m we have our Christingle service. Carols on the Crescent Green this year will be 18th December from 6p.m with mulled wine and mince pies and a lively mixture of music. St Mary's Carol Service

will be on Christmas Eve, Sunday 24th December from 6 p.m, followed by Christmas Day family Communion at 11.00 a.m then back home for presents and turkey! Many of our Christmas memories brighten up the cold grey days and I was reminded recently of the Haversham Hedgehogs. These little creatures, made largely from teasels and yoghurt pots, were especially popular at this time of year. The Hedgehog 'Factory' was started by our redoubtable Alison Deering in 1987 and after a slow start demand increased. Many local people (sadly many now have died) were involved in the making of these creatures, including (just a few) Emma and Gill Collingham, Nan Topp, Lesley Gilbert, Kath Davis, Mickey Geary, Joan Harrison and Pauline Walker. Almost the whole of Haversham was converted to a particular type of yoghurt just for the pot! The creatures graduated from a simple lady with a white cap and apron to farmers, brides and bridesmaids, doctors, bishops and a typical English nanny! Before the closure of the 'factory' in 2007, the creatures had

When replying to this advert please quote ref: HCLL09

been sent all over the world, raising over £20,000 for various charities. It is good to have some happy memories of those we love. As we remember them, let's also remember Jesus, the reason for the season, his birth bringing light into an increasingly dark world. Look out for the Haversham Hedgehogs at the Christmas Tree Festival this year!

Merry Christmas to All!

Carols on the Green

The Crescent, Haversham

**18th December
from 6.00 p.m.**

Mulled wine and mince pies

KIM
CONSTRUCTION

A traditional quality family run
building firm
Building locally for over
30 years

For more information visit our website
www.kimconstruct.co.uk
or contact us directly
Email: info@kimconstruct.co.uk
Telephone: 01234 711797

C. P. Locks

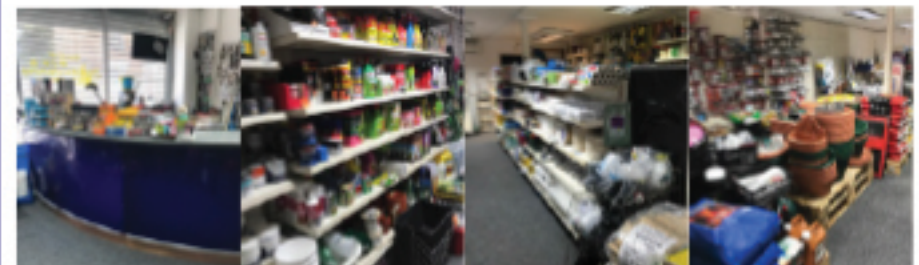
54 Church Street , Wolverton, MK12 5JW

Tel: 01908 225954

Your local key cutting and DIY store stocks a wide range of home decorating materials as well as a good range of gardening products, including potting compost and garden pots.

Our opening hours as follows:

**Monday, Tuesday, Thursday, Friday 9:00am -4:00pm;
Saturday 10.00am to 4.00 pm. Closed Wednesday & Sunday**



NEWS FROM ST PETER'S

The new Editor of the magazine (Carol) has kindly invited St Peter's to continue contributing to it. We consider it a privilege and are encouraged that the residents of the two villages are interested to hear what we get up to at the church over the border. Our Memorial Service was very well attended; many present who do not regularly worship at St Peter's thought it was a lovely service giving them an opportunity within their own Parish to remember their loved ones.

Those who attended our Remembrance Service, which we hold at 3.00p.m. because our regular slot of 9.30a.m. used to be rushed to fit in with the services of the larger churches in the Group, remembered those from our two villages who served in the two great wars and whose names are engraved on our fine war memorial, and those who have died in wars since together with our own loved ones who died serving our country. Refreshments were served after the service which gave everyone an opportunity to socialise.

Do support our Carol Service which will be held at 6.00p.m. on the 15th

December and it is the turn of St Peter's to hold that beautiful service, Midnight Communion, at 11.30p.m. on the 24th December.

Unfortunately, the Le Tour de Tyringham Cycle Ride had to be cancelled. The flooding of the area the week before left the road surface too dangerous in places for the cyclists. A big disappointment as much work goes into organising an event of this size.

The associated raffle was a bonus; the organisers of that aspect of the event decided to sell tickets at Olney Market Square and this proved very profitable. Thank you to everyone in the Group who bought tickets.

A coffee morning was held recently in the church. This was

run by the Reverend Kimonie Nicholls as part of her Ministry and Mission Project and raised £110 for the toilet fund.

DATES FOR THE DIARY

**15 December 6.00p.m.
CAROL SERVICE**

**24 December 11.30p.m.
MIDNIGHT
COMMUNION**

Christopher THE LOCKSMITH

ARE YOUR LOCKS BEHAVING BADLY?

We Value Old Fashioned Customer Service
A Local Trusted Family Business Since 1989

- Specialist in UPVC & Wooden Doors
- No Call Out Charge
- No Fix No Fee
- All Work Fully Guaranteed
- 10% Senior Citizen Discount

For More Advice & Help Call Christopher:
07772 111 222

www.christopherthelocksmith.co.uk

THE LAST RESORT

Local Organisation

Magazine

Contacts

Editor: Carol Langham
carol.langham@havershamlittlelinfordpc.gov.uk

07961 047142

Advertising: Richard Pryor 07824 483337

Parish Council

Chair: Richard Pryor
richard.pryor@havershamlittlelinfordpc.gov.uk

07824 483337

Clerk: Maria Manthorpe
clerk@havershamlittlelinfordpc.gov.uk

Social Centre

Chair: Jackie Brown 01908 313388
jackie@brown39.me.uk

Bookings:
bookings@havershamsocialcentre.org.uk

Lamp Group of Churches

Rev Adrian Low 07883 717642

Haversham Village School

Headteacher: David Ley 01908 312673

Haversham Sailing Club

commodore@havershamsc.org

Local Services

Water

Emergency/Enquiries 03457 145 145

Gas

Emergency 0800 111 999

Electricity

Emergency 0800 6783 105

Police

Emergency 999
For non-urgent messages 101

Milton Keynes City Council

Main Number 01908 691691

National Rail

Train Enquiries 03457 48 49 50

Traveline

All public transport advice 0871 200 22 33

Citizens Advice Bureau

CMK 0808 278 7991

RSPCA

Emergency/Enquiries 0300 1234 999

ADVERTISING RATES PER ISSUE

Full page	£25.00	Half page	£15.00	Quarter page	£9.00
Inside Front Cover	£35.00	Outside Back Cover	£35.00		

For regular advertisers, 6 issues for the price of 5

Please contact Richard Pryor on 07824 483337

or e-mail: richard.pryor@havershamlittlelinfordpc.gov.uk

FIERCE

GYM

TAKE YOUR FITNESS TO
**ANOTHER
LEVEL!**



**SIGN UP
TODAY**

www.fiercegym.co.uk  

FIERCE

VOUCHER

THIS VOUCHER ENTITLES
THE BEARER TO

1 DAY

TRAINING AT FIERCE

Use before: 31st JANUARY 2025

When replying to this advert please quote ref: HCLL12